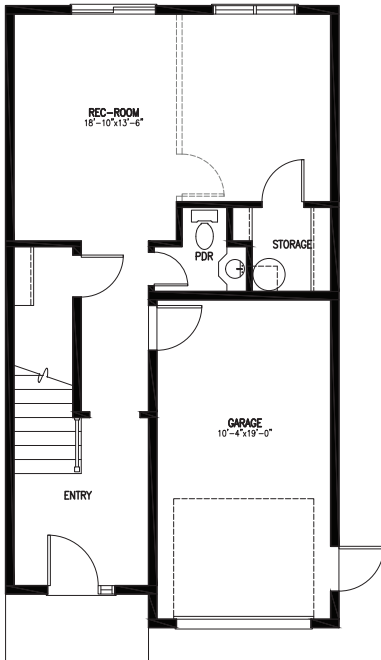


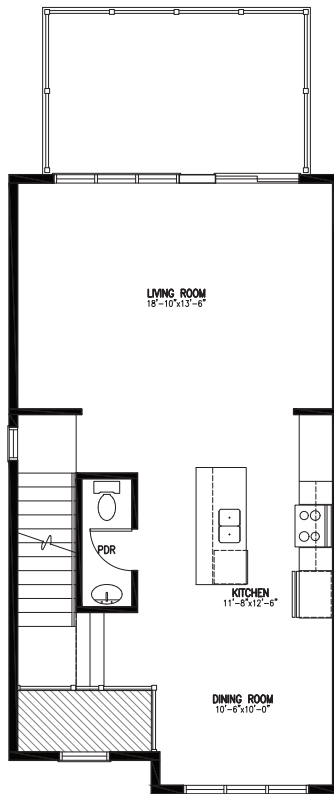
## THE MARINA

3 BEDROOMS | 2.2 BATHS | 1905 SQ. FT.

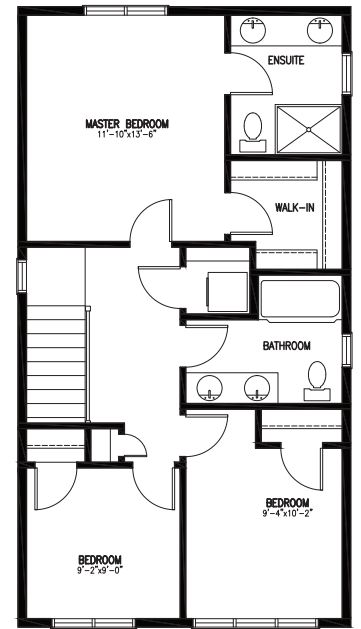
- Modern design
- Energy efficient
- Hardwood floors & Staircase
- 16' deck
- Mini split heat pumps
- 9' ceilings
- Single car garage



**BASEMENT** = 490 SQ.FT.  
**GARAGE** = 227 SQ.FT.



**FIRST FLOOR** = 681 SQ.FT.



**SECOND FLOOR** = 734 SQ.FT.

TIMELESS BEAUTY. AGE-OLD SIMPLICITY.

**CONTACT us TODAY**

[www.amarainc.ca](http://www.amarainc.ca)  
902 440 0987  
[chamilton@amarainc.ca](mailto:chamilton@amarainc.ca)

